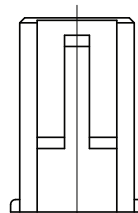


6P~16P



2P

| # of Contacts | Dimensions (mm) | | | | | | |
|---------------|-----------------|------|------|------|-------|------|------|
| | A | B | C | D | E | F | G |
| 2 | 2.0 | 4.6 | 5.6 | 1.0 | 3.2 | 0.75 | 1.40 |
| 3 | 4.0 | 6.6 | 7.6 | 3.0 | 3.9 | 1.05 | 1.85 |
| 4 | 6.0 | 8.6 | 9.6 | 5.0 | 4.9 | 1.35 | 1.85 |
| 5 | 8.0 | 10.6 | 11.6 | 7.0 | 5.9 | 1.65 | 1.85 |
| 6 | 10.0 | 12.6 | 13.6 | 9.0 | 6.9 | 1.95 | 1.85 |
| 7 | 12.0 | 14.6 | 15.6 | 11.0 | 10.20 | | |
| 8 | 14.0 | 16.6 | 17.6 | 13.0 | 12.20 | | |
| 9 | 16.0 | 18.6 | 19.6 | 15.0 | 14.20 | | |
| 10 | 18.0 | 20.6 | 21.6 | 17.0 | 14.20 | | |
| 11 | 20.0 | 22.6 | 23.6 | 19.0 | 14.20 | | |
| 12 | 22.0 | 24.6 | 25.6 | 21.0 | 14.20 | | |
| 13 | 24.0 | 26.6 | 27.6 | 23.0 | 14.20 | | |
| 14 | 26.0 | 28.6 | 29.6 | 25.0 | 14.20 | | |
| 15 | 28.0 | 30.6 | 31.6 | 27.0 | 14.20 | | |
| 16 | 30.0 | 32.6 | 33.6 | 29.0 | 14.20 | | |

For Use With Contact
P/N: W038-0002-001-Z

ELECTRICAL:

CURRENT RATING: 3A AC/DC
VOLTAGE RATING: 250V AC/DC
CONTACT RESISTANCE: 30 mΩ max.
WITHSTANDING VOLTAGE: 1000V AC for 1 min.
INSULATION RESISTANCE: 1000 MΩ min.
TEMPERATURE RANGE: -25°C to 85°C

MATERIAL:

INSULATOR: Nylon 66 UL94V-0
PACKAGING: 1000 pcs/ Bag

HOW TO ORDER:

W 0 3 8 - X X 4 1 - 0 0 0 - Z

OF POSITIONS:

02 - 16 Position

**RoHS
COMPLIANT**

| Rev | Drawn | Checked | Approved | Date |
|-----|-------|---------|----------|--------|
| 0 | B.S. | S.M. | S.M. | 5/7/07 |
| | | | | |
| | | | | |

SMP TECHNOLOGY, INC.

SCALE:n/a Housing, 2.0mm Pitch, Yeonho SM Type