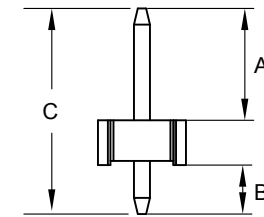
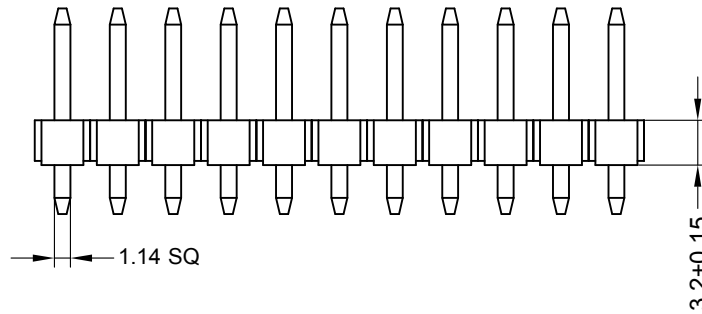


RECOMMENDED PCB LAYOUT



DIMENSION NUMBER	A	B	C
01	10.80	3.50	17.50
02	12.70	4.42	20.32

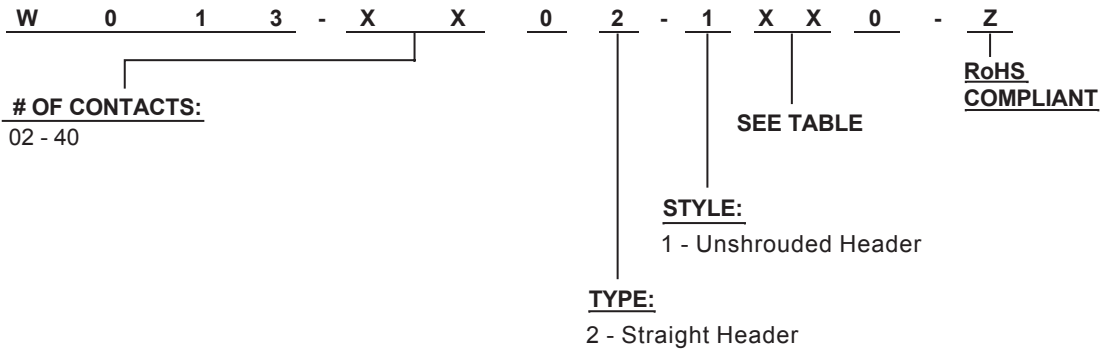
**ELECTRICAL:**

CURRENT RATING: 7A AC/DC  
 VOLTAGE RATING: 250V AC Max.  
 CONTACT RESISTANCE: 20 milliohm Max.  
 INSULATION RESISTANCE: 1000 Megaohm Min.  
 DIELECTRIC WITHSTANDING VOLTAGE:  
 1500V (rms) AC for 1 Minute  
 OPERATING TEMPERATURE: -25°C to +85°C

**MATERIAL:**

CONTACT: Brass, Tin Plated  
 BASE: PA6T UL94V-0  
 QTY: 1000 pcs./Bag

**HOW TO ORDER:**



Rev	Drawn	Checked	Approved	Date
0 Issued	B.S.	S.M.	S.M.	01/18/18

**SMP TECHNOLOGY, INC.**

Header, 3.96mm Pitch, Straight