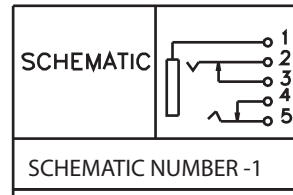


P.C.B LAYOUT  
(BOTTOM VIEW)



**ELECTRICAL:**

VOLTAGE: 16 VDC

CURRENT: 0.3A

CONTACT RESISTANCE: 100 milliohm (Max.)

INSULATOR RESISTANCE: > 100 Mega ohms

DIELECTRIC WITHSTANDING VOLTAGE: 500VAC FOR 1 MIN.

OPERATING TEMPERATURE: -25°C TO +85°C

**MATERIAL:**

INSULATOR: PBT ;UL94V-0

CONTACT: Coppery Alloy; Au Plated

SHIELD: Brass; Tin Plated

**HOW TO ORDER:**

**S** **8** **0** **1** - **0** **2**

**TYPE NUMBER**  
02

**SCHEMATIC NUMBER:**  
See Schematic  
Number Above

**LEAD TYPE:**  
0 - Straight

**STACK:**  
1 - Single

**BUSHING TYPE:**  
2 - Non Threaded

**COLOR OPTIONS  
(Body/Cover)**  
A - Fully Shielded

**RoHS  
COMPLIANT**

| Rev | Drawn                       | Checked | Approved | Date |          |
|-----|-----------------------------|---------|----------|------|----------|
| 0   | Issued                      | D.H.    | S.M.     | S.M. | 03/26/04 |
| A   | Revised for RoHS Compliance | B.S.    | S.M.     | S.M. | 07/23/08 |

**SMP TECHNOLOGY, INC.**

Stereo Jack, 9.60mm Width, 12.75mm Height, Fully Shielded