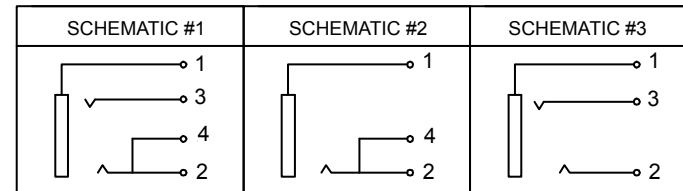
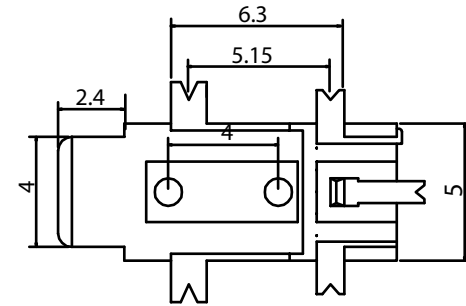
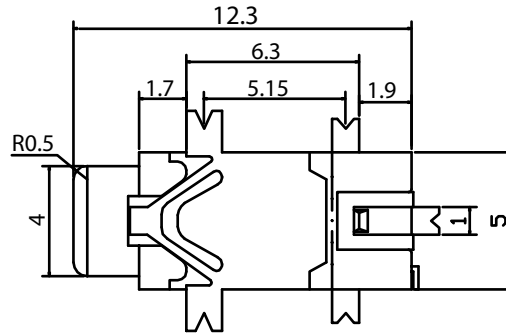


RECOMMENDED PCB LAYOUT



DURABILITY:
 INSETION/WITHDRAWLS :5000 Cycles
ELECTRICAL:
 RATED LOAD: 15 VDC @20 ma
 INSULATOR RESISTANCE: >1000MOhms Min.
 DIELECTRIC WITHSTANDING VOLTAGE: 500VAC FOR 1 MIN.
 CONTACT RESISTANCE: < 50 milli-ohms
MATERIAL:
 INSULATOR MATERIAL: NYLON PPA
 CONTACTS: PHOSPHOR BRONZE - SILVER PLATED

HOW TO ORDER:

S **7** **1** **3** - **0** **2** **X** **0** - **1** **2** **0** **1** - **Z**

TYPE NUMBER 02 **SCHEMATIC NUMBER:** SEE SCHEMATIC NUMBER ABOVE **RoHS COMPLIANT**

PACKAGING 1 - Tape & Reel

Rev	Drawn	Checked	Apprvd.	Date
0	WHS	SBM	SBM	05/015/06

SMP TECHNOLOGY, INC.

SCALE :N/A

Stereo Ear Phone Jack: 2.5mm; Type 2

TOL. DEC. .X +/- 0.20 .XX +/- 0.15 .XXX +/- 0.10 ANGLE +/- 3° UNIT: mm

P/N: S713-02X0-1201-Z