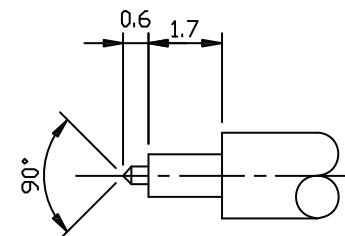
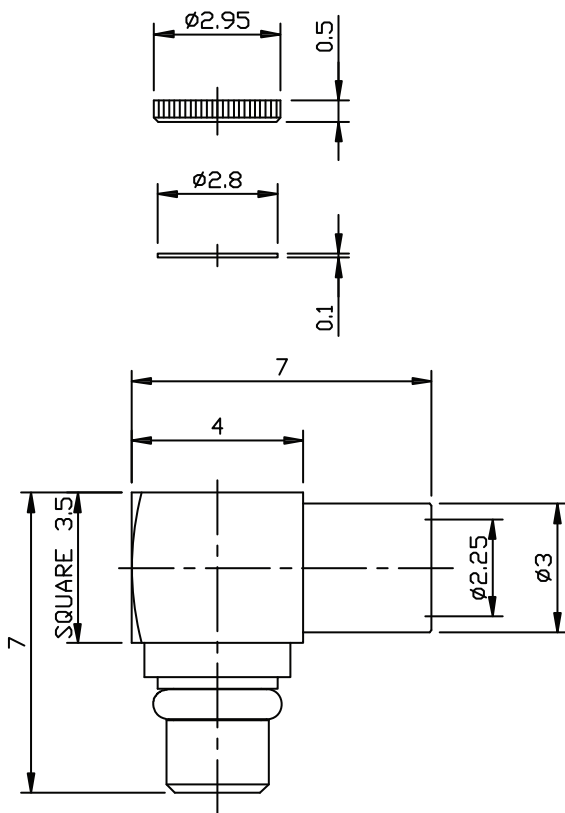


06	COVER	BRASS	GOLD	1
05	INSULATOR COVER	POM	NONE	1
04	CENTER PIN	BRASS	GOLD	1
03	C RING	BERYLLIUM COPPER	GOLD	1
02	INSULATOR	TEFLON	NONE	1
01	BODY	BRASS	GOLD	1
NO	DESCRIPTION	MATERIAL	FINISH	Q'TY



**RECOMMENDED
STRIP LENGTHS**

HOW TO ORDER:

C 1 0 0 - 1 7 0 0 - 1 0 0 0 - Z

**RoHS
COMPLIANT**

Rev	Description	Drawn	Checked	Approved	Date
0	Issued	WHS	S.M.	S.M.	9/11/10

SMP TECHNOLOGY, INC.

MMCX Right Angle Plug; Solder; For .085 Cable

SCALE: N/A

TOL. DEC. .X +/- 0.20 .XX +/- 0.20 .XXX +/- 0.20 ANGLE +/- 3° UNIT: mm

P/N: C100-1700-1000-z