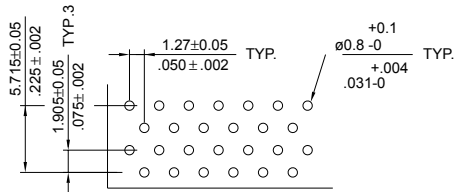
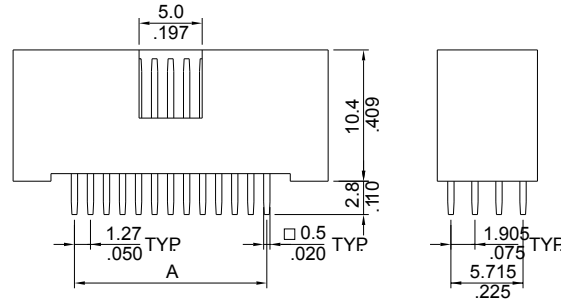
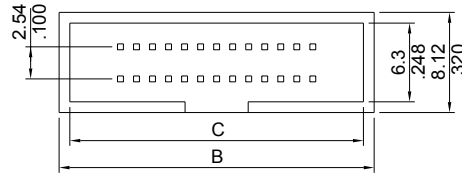


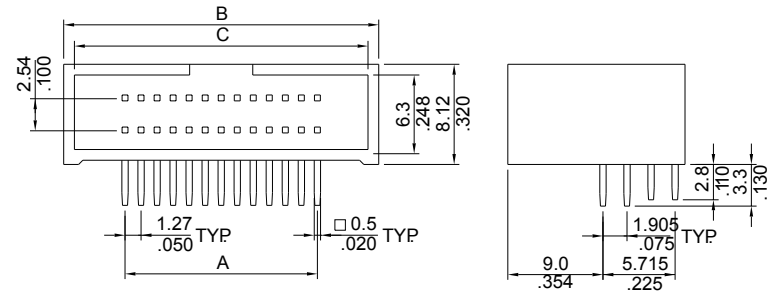
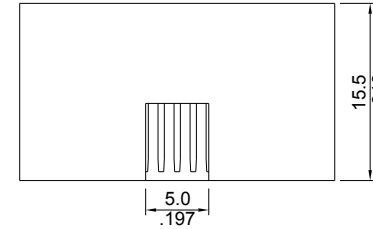
Recommended P.C. Board Layout  
(26,34,50 Circuits)



Recommended P.C. Board Layout  
(20,32,40,52,60,68,80,100 Circuits)



**STRAIGHT**



**RIGHT ANGLE**

**DIMENSION(mm)**

CONTACTS	A	B	C
20	11.43	21.00	19.00
26	15.24	24.80	22.80
32	19.05	28.60	26.60
34	20.32	29.80	27.80
40	24.13	33.70	31.70
50	30.48	40.00	38.00
52	31.75	41.30	39.30
60	36.83	46.40	44.40
68	41.91	51.40	49.40
80	49.53	59.10	57.10
100	62.23	71.70	69.70

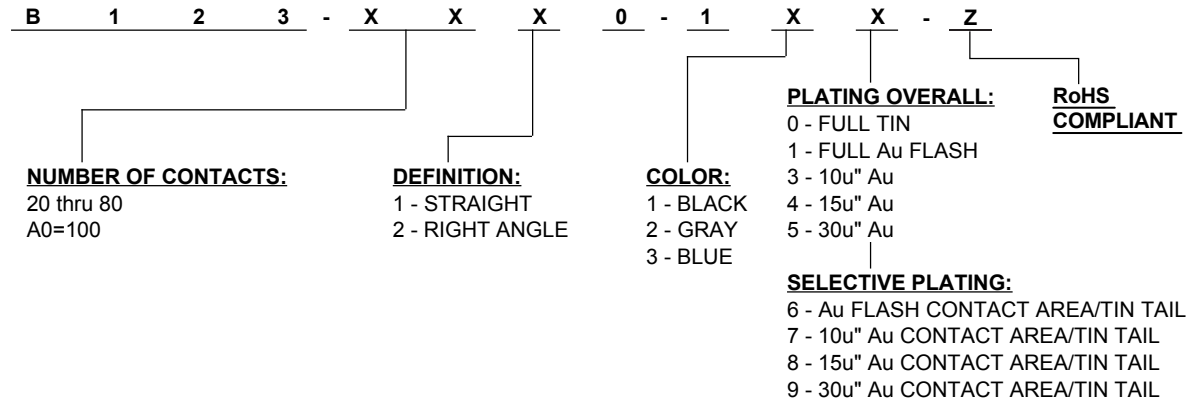
**ELECTRICAL:**

CURRENT: 0.5A  
 CONTACT RESISTANCE: < 30mΩ  
 INSULATOR RESISTANCE: > 1000MΩ  
 DIELECTRIC WITHSTANDING VOLTAGE: 500VAC FOR 1 MIN.  
 OPERATING TEMPERATURE: -55° C TO +105° C

**MATERIAL:**

INSULATOR: PBT & 30% Glass Fiber UL94V-0  
 CONTACT: Copper Alloy

**HOW TO ORDER:**



Rev	Drawn	Checked	Approved	Date
0	A.M.	S.M.	S.M.	02/01/96
A	B.S.	S.M.	S.M.	08/04/08

**SMP TECHNOLOGY, INC.**

Box Header, 1.27mm Pitch

DRAWING No. B123

TOL. DEC.    .X +/- 0.35    .XX +/- 0.25    .XXX +/-    ANGLE +/-    UNIT: mm/in

SERIES: B 1 2 3