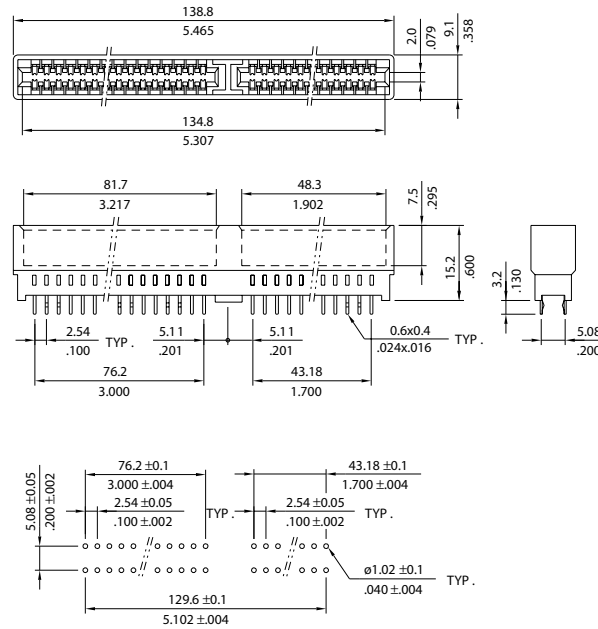
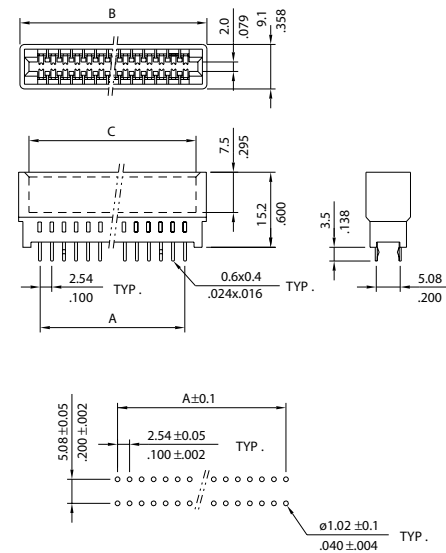


### 98 PIN CONNECTOR



Recommended P.C. Board Layout

### 36 & 62 PIN CONNECTOR



Recommended P.C. Board Layout

### DIMENSION(mm)

CONTACTS	A	B	C
36	43.18	52.00	48.30
62	76.20	85.20	81.30

### ELECTRICAL:

CURRENT: 3A  
 CONTACT RESISTANCE: < 20m Ω  
 INSULATOR RESISTANCE: > 5000M Ω  
 DIELECTRIC WITHSTANDING VOLTAGE: 1500VAC FOR 1 MIN.  
 OPERATING TEMPERATURE: -55° C TO +105° C

### MATERIAL:

INSULATOR: GLASS FIBER REINFORCED PBT (UL94V-0)  
 CONTACT: COPPER ALLOY

### HOW TO ORDER:

**B 0 4 1 - X X X X - X X X - Z**

**NUMBER OF CONTACTS:**  
036, 062, 098

**CONTACT MATERIAL:**  
1 - BRASS  
2 - PHOSPHOR BRONZE

**COLOR**  
1 - BLACK

**PLATING OVERALL:**  
0 - FULL TIN  
1 - FULL Au FLASH  
3 - 10u" Au  
4 - 15u" Au  
5 - 30u" Au

**SELECTIVE PLATING:**  
6 - Au FLASH CONTACT AREA/TIN TAIL  
7 - 10u" Au CONTACT AREA/TIN TAIL  
8 - 15u" Au CONTACT AREA/TIN TAIL  
9 - 30u" Au CONTACT AREA/TIN TAIL

**RoHS COMPLIANT**

Rev	Drawn	Checked	Approved	Date
0	S.E.	S.M.	S.M.	2/1/96
A	B.S.	S.M.	S.M.	07/07/08

**SMP TECHNOLOGY, INC.**

ISA SLOT CONNECTOR, 2.54mm Pitch

TOL. DEC. .X +/- 0.35 .XX +/- 0.25 .XXX +/- 0.15 ANGLE +/- UNIT: mm

P/N: B041-XXXX-XXX-Z