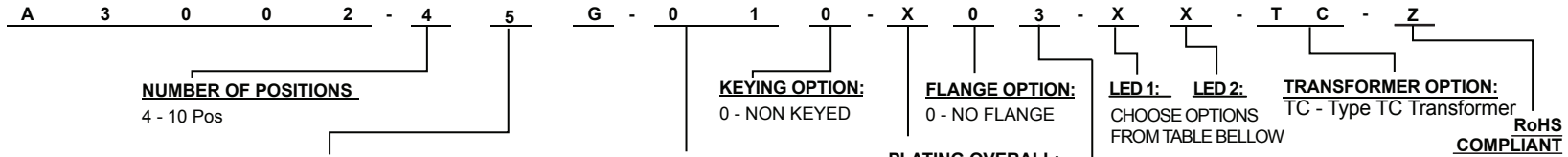


**HOW TO ORDER:**



**NUMBER OF POSITIONS:**  
4 - 10 Pos

**NUMBER OF CONTACTS:**  
5 - 10 CONTACTS

**KEYING OPTION:**  
0 - NON KEYED

**NUMBER OF PORTS:**  
01 - SINGLE PORT

**FLANGE OPTION:**  
0 - NO FLANGE

**PLATING OVERALL:**  
0 - FULL Au FLASH  
1 - 10u" Au  
2 - 30u" Au  
3 - 50u" Au

**LED 1: LED 2:**  
CHOOSE OPTIONS FROM TABLE BELOW

**TRANSFORMER OPTION:**  
TC - Type TC Transformer  
**RoHS COMPLIANT**

**PCB GROUND TAB**  
3 - BACK 3.05 mm

**SELECTIVE PLATING:**  
5 - 50u" Au CONTACT AREA/TIN TAIL  
6 - Au FLASH CONTACT AREA/TIN TAIL  
7 - 10u" Au CONTACT AREA/TIN TAIL  
8 - 15u" Au CONTACT AREA/TIN TAIL  
9 - 30u" Au CONTACT AREA/TIN TAIL

OPTION	FORWARD	REVERSE
G	GREEN	-----
Y	YELLOW	-----
1	GREEN	ORANGE
2	YELLOW	ORANGE
3	GREEN	RED
4	YELLOW	RED
5	GREEN	YELLOW
6	YELLOW	GREEN

**ELECTRICAL:**  
CURRENT RATING: 1.5A Max.  
VOLTAGE RATING: 125 VAC  
CONTACT RESISTANCE: 20milli-Ohms Max.  
TEMPERATURE RANGE: -40°C TO +70°C  
INSULATION RESISTANCE: 500M-Ohms  
DIELECTRIC VOLTAGE: 1,500 Vrms 50-60 Hz.; 1 Min.

**MATERIAL:**  
SPRING WIRE: 0.35mm Thickness Phosphor Bronze  
Gold Plating Over 50u" Nickel  
Shield : .24 mm Copper Alloy with Tin Plating  
Insulator : High Temp Plastic; PA-46 ; UL 94 V-0

**ENVIRONMENTAL:**  
Mates with Modular Plug Conforming to FCC Part 68, Subpart F; Meets IEEE 802.3

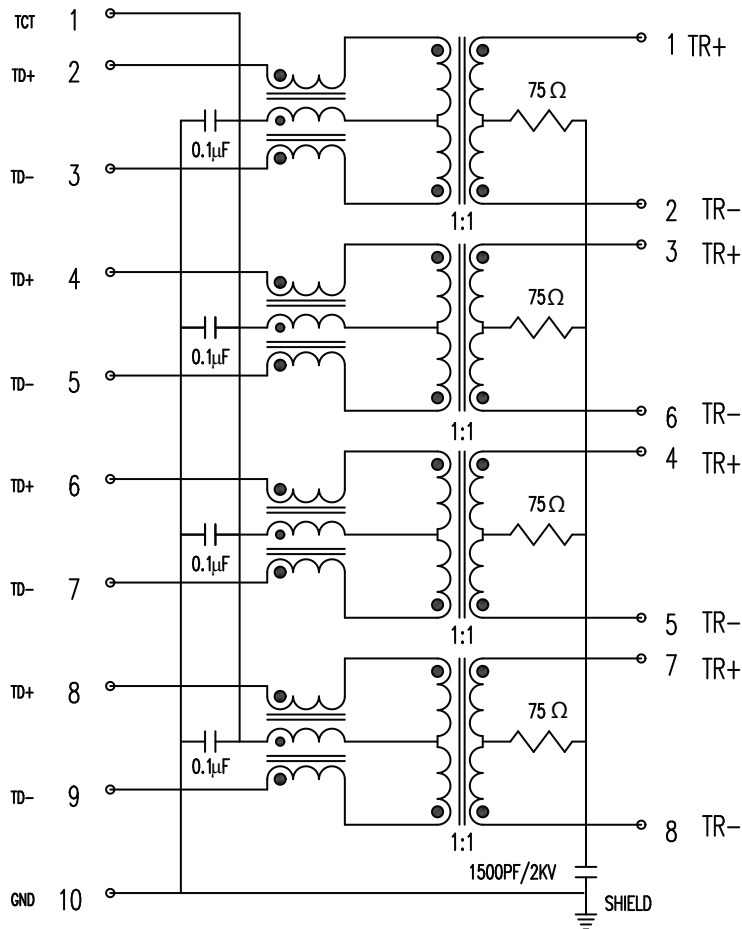
Rev		Drawn	Checked	Approved	Date
0	Issued	B.S.	S.M.	S.M.	09/08/10
A	Schematic Change - Connect Pin #10 to Ground	B.S.	S.M.	S.M.	10/18/10

**SMP TECHNOLOGY, INC.**  
RJ 45 , Top Entry , Gigabit Circuit Transformer TC, Single Port  
Back 3.05 , w/ LED's

SCALE: N/A

TOL. DEC. ANGLE +0.45 -0.15 UNIT: mm

P/N: A3002-45G-010-X03-XX-TC-Z Pg: 1



### ELECTRICAL SPECIFICATIONS AT 25° C

Insertion Loss dB max	Return Loss dB min			Crosstalk(db TYP)			Common Mode Rejection (dB TYP)		Hipot(vrms)
	1-30MHz	30- 60MHz	60- 80MHz	1-30MHz	30- 60MHz	60- 80MHz	1-50MHz	50-150MHz	
-1.0	-18	-16	-12	-40	-35	-30	-30	-20	1500

Inductance : 350 μH minimum OCL with 8 ma bias current

Rev	Drawn	Checked	Approved	Date	
0	B.S.	S.M.	S.M.	09/08/10	<b>SMP TECHNOLOGY, INC.</b>
A	B.S.	S.M.	S.M.	10/18/10	
SCALE:n/a					RJ 45 , Top Entry , Gigabit Circuit Transformer TC, Single Port
					Back 3.05 , w/ LED's
					P/N: A3002-45G-010-X03-XX-TC-Z
					Pg: 2